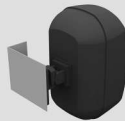
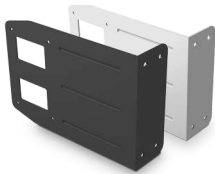
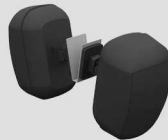


## MASKCL-BL | MASKCL-W



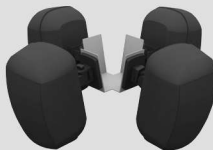
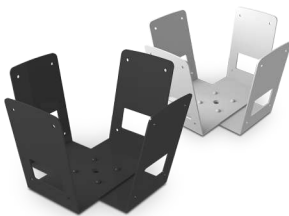
**MASKCL** bracket has been designed to mount MASKC loudspeakers with CLICKMOUNT at an angle of 90° from the wall.

## MASKCV-BL | MASKCV-W



**MASKCV** bracket has been designed to mount 2 pieces of MASKC loudspeakers of the same size and weight with CLICKMOUNT from the ceiling at a 180° angle from each other.

## MASKCW-BL | MASKCW-W



**MASKCW** bracket has been designed to mount 4 pieces of MASKC loudspeakers of the same size and weight with CLICKMOUNT from the ceiling at a 90° angle from each other.

### Safety instructions

Please follow the safety instructions in this manual to obtain optimum results before use. We also recommend to keep this instruction manual for future reference.

Install the unit only in a location that can structurally support the weight of the loudspeaker unit(s) and mounting bracket(s).

Use adequate and sufficiently sturdy mounting screws, wall plugs and/or additional support accessories to ensure safe installation. Make sure that each screw is well tightened after installation.

Doing otherwise may result in the unit(s) falling down, causing personal injury and / or property damage. Do not stand or sit on, nor hang down from the mounted loudspeaker(s) as this may cause them to fall down or drop, resulting in personal injury and/or property damage.

These brackets are designed for indoor use only. Do not use outdoors.

Apart Audio takes no responsibility for any accidents or injuries caused by wrong installation. If necessary secure the speakers with additional safety cables, such as our SAFECAB range of safety cables.