



ShowMatch™ DeltaQ™ Array Loudspeaker

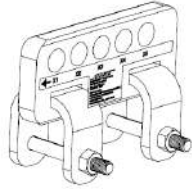
Array Frame Multipoint Bracket Accessory: SMAFMP

Installation Information

Thank you for selecting Bose® ShowMatch DeltaQ array loudspeakers. This document is intended to provide professional installers with basic installation and safety guidelines for using the array frame multipoint bracket accessory with ShowMatch loudspeakers. Please read this document before attempting installation.



The ShowMatch Array Frame Multipoint Bracket (SMAFMP) expands the number of rigging points along the center rail of the Array Frame (SMAF) or T-Bar Array Frame (SMAFT) 7 to 45 possible points. Use Bose Modeler® software or the Bose Array Tool to determine the correct position and orientation of the multipoint bracket on the array frame to achieve the required aiming angles, and to confirm the array does not exceed load limits of the frame.



Multipoint bracket

To install the array frame multipoint bracket, follow these instructions:

1. Use Bose Modeler or Bose Array Tool to generate a ShowMatch Array Rigging Report. For more information on Modeler and the Bose Array Tool, see pro.bose.com.
2. Obtain the pickup point from the ShowMatch Array Rigging Report. See Fig. 1.
3. The first letter in the pickup point (A through F) indicates a rigging point on the center rail of the array frame. See Fig. 2.
4. The second letter in the pickup point (X or Y) indicates the correct orientation of the multipoint bracket on the center rail. When oriented correctly, the arrow printed on the multipoint bracket points to the front of the array. See Fig. 3.
5. Place the multipoint bracket on the center rail in the orientation indicated by the software. Align the front hole of the bracket with the rigging point specified in Step 3, and secure using the included bolt. See Fig. 4:
6. Attach the rear hole using the included bolt. Fasten the included nuts to both bolts.
7. Use included bolt pins to secure the nuts.
8. Attach a standard shackle (not included) to the rigging point on the multipoint bracket as specified by the software. See Fig. 5.
9. Connect the chains to the shackle attached to the multipoint bracket.

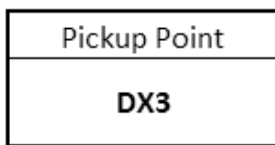


Fig. 1. Pickup point DX3

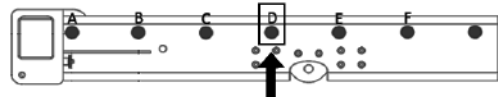


Fig. 2. Center rail rigging point D

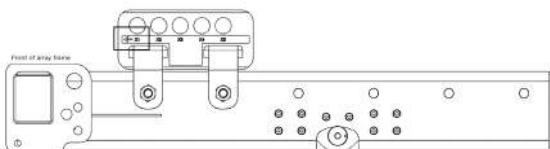


Fig. 3. Multipoint bracket orientation X

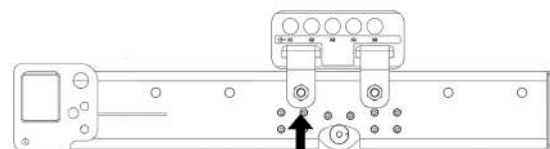


Fig. 4. Center rail rigging point D and orientation X

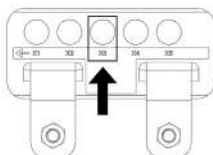


Fig. 5. Rigging point X3



ShowMatch™ DeltaQ™ Array Loudspeaker

Array Frame Multipoint Bracket Accessory: SMAFMP

Safety Information



CAUTION: This product is intended for installation by professional installers only!
PRECAUCIÓN: Solo un instalador profesional deberá montar este producto!
ATTENTION: L'installation de ce produit est réservée à un technicien professionnel!
ACHTUNG: Dieses Produkt darf nur von fachkundigen Monteuren installiert werden!

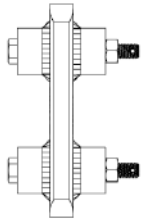


CAUTION: Make no modification to system or accessories. Unauthorized alterations may compromise safety, regulatory compliance, and system performance.
PRECAUCIÓN: No realice alteraciones no autorizadas a este producto; esto podría comprometer la seguridad, el cumplimiento de las normas y el rendimiento del sistema.
ATTENTION: Ne pas faire des modifications non autorisées à ce produit; ce qui pourrait compromettre la sécurité, la conformité réglementaire et la performance du système.
ACHTUNG: Keine nicht autorisierten Veränderungen am Produkt vornehmen. Diese können die Sicherheit, die Einhaltung von Richtlinien und die Systemleistung beeinträchtigen.



CAUTION: This accessory is for use with Bose ShowMatch DeltaQ Array loudspeakers only.
PRECAUCIÓN: Este accesorio está diseñado para usarse únicamente con altavoces Bose ShowMatch DeltaQ Array.
ATTENTION: Cet accessoire est destiné pour l'usage avec les haut-parleurs Bose ShowMatch Delta Q exclusivement.
ACHTUNG: Dieses Zubehör ist ausschließlich zur Verwendung mit Bose ShowMatch DeltaQ Array Lautsprechern vorgesehen.

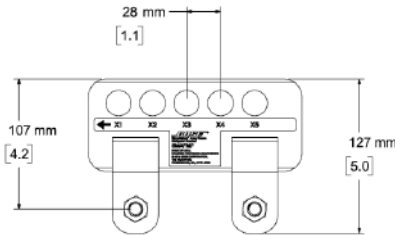
Product Dimensions



Top View



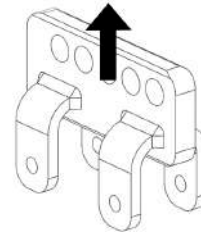
Front View



Right View

Single Point, 10:1 Working Load Limit (in accordance with ANSI E1.8-2012)

ShowMatch Array Frame
 Multipoint Bracket (SMAFMP)
 WLL = 1800 lbs (815 kg)



Importer Information

European Union

Bose GP, Castleblayney Road, Carrickmacross, County Monaghan, Ireland

China

Bose Electronics (Shanghai) Company Limited, Part C, Plan 9, No. 353 North Riying Road, China (Shanghai) Pilot Free Trade Zone

Taiwan

Bose Taiwan Branch, 9F-A1, No. 10, Section 3, Minsheng East Road, Taipei City 104, Taiwan
 Tel: 886 2 2514 7977

Mexico

Bose de México, S. de R.L. de C.V., Paseo de las Palmas 405-204, Lomas de Chapultepec, 11000 México, D.F.
 Tel: 001 800 900 2673

Additional Information

For additional information on ShowMatch DeltaQ Array loudspeaker modules and accessories, refer to the installation guide available at pro.bose.com. To request a printed copy, use the phone numbers provided.

Contact Information

Bose Corporation
 The Mountain
 Framingham, MA 01701 USA
 Corporate Center: 508-879-7330
 Americas Professional Systems,
 Technical Support: 800-994-2673

Limited Warranty

Your product is covered by a limited warranty, Visit pro.bose.com for warranty details.

The warranty information provided with this product does not apply in Australian and New Zealand. See our website at www.bose.com/au/warranty or www.bose.com/nz/warranty for details of the Australian and New Zealand warranty.



781488-0010

