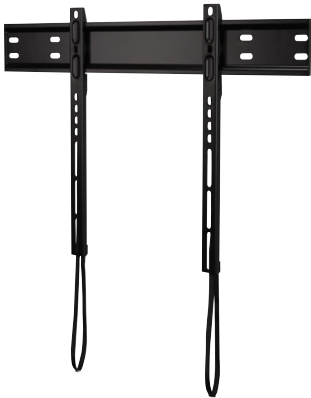




OC80F.2

Protect your TV from accidental bumps and tips by mounting it safely to the wall.



PRODUCT SPECIFICATIONS*

Fits most: 37-55" TVs

Supports up to: 80 lbs (36 kg)

Mounting profile: 0.6" (1,4 cm)

Universal & VESA compliance:

200x200 to 400x400

Mounting: Double-stud

Warranty: 5 years

Color: Black

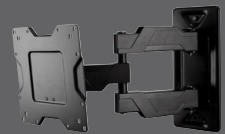


PRODUCT BENEFITS*

- Low profile "hidden" design
- Ideal for TVs with bottom or side-loading connectors
- Lift n' Lock™ feature offers easy, three step installation
- Horizontal wall plate requires only two holes for quick installation
- Wall plate has integrated level
- Small footprint provides ample room for power and AV cutouts behind TV
- Vertical rails fit VESA and non-VESA TVs
- Vertical rails slide on wall plate for minor left/right repositioning
- UL listed for safety
- Complete hardware kit included

*Subject to change

SERIES:



FULL MOTION



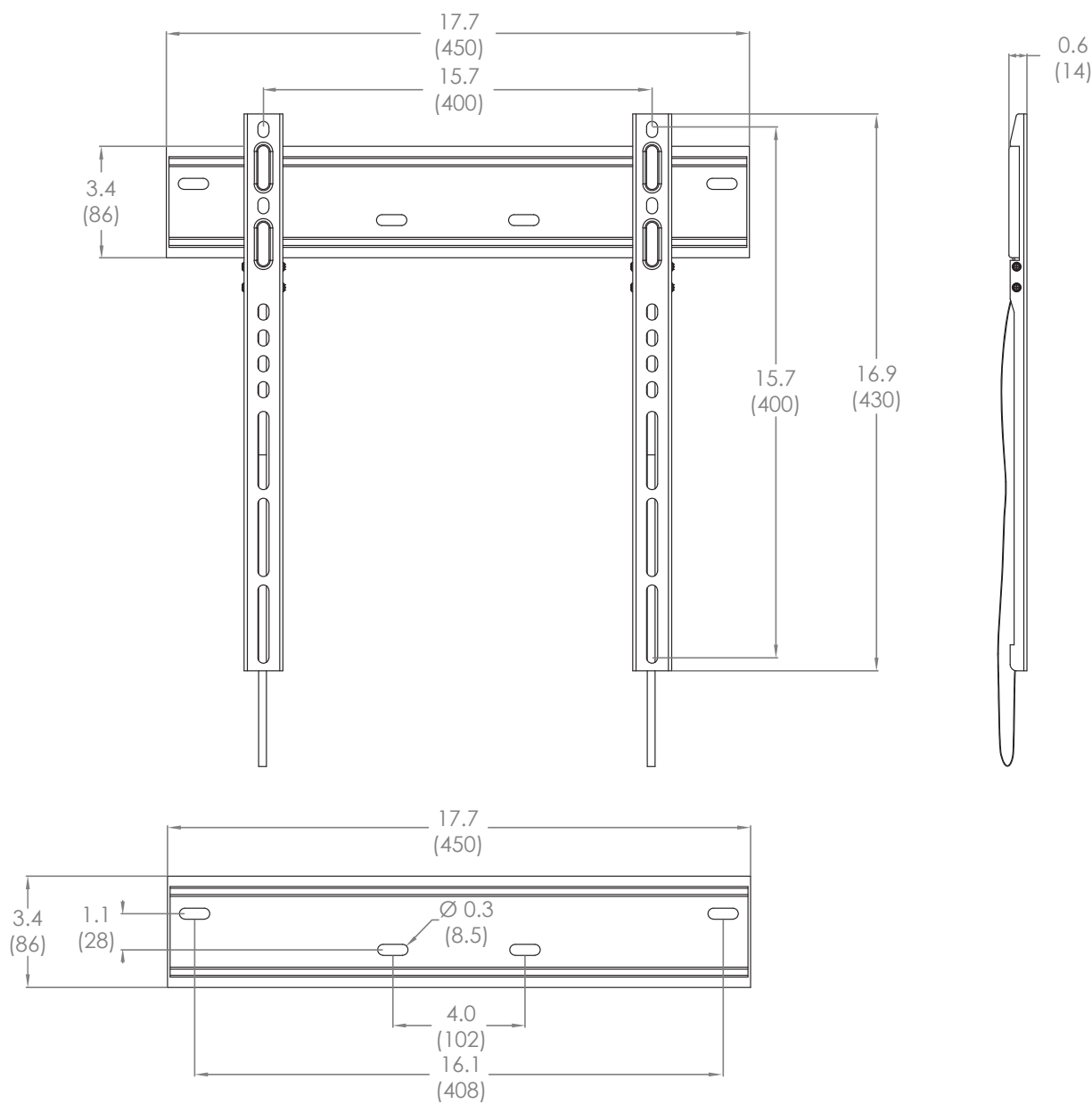
TILT



FIXED

OC80F.2

inches (mm)



	UPC	Dimensions WxDxH inches (mm)	Wt lbs (kg)	Qty
Box	698833048384	19.8 x 0.7 x 6.1 (504x18x155)	4.3 (2)	--
MC	10698833048381	20.3 x 9.5 x 8.3 (514x241x210)	18 (8,1)	4

Box Contents	Qty
Wall plate	1
Vertical rail	2

Box Contents	Qty
Instruction manual	1
Complete hardware kit	1