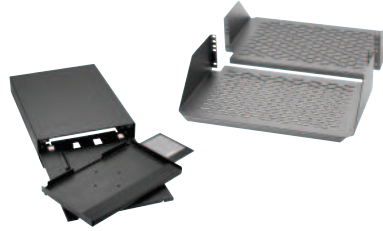


# Rack Mount Shelves

## specifications

Rack mounted shelves shall be one, two, and three rack spaces and 19 inches wide. The shelves shall be front mounted, slide-out or cantilevered versions. Keyboard shelves shall accommodate either 16.5 inch or 20 inch wide keyboards and a mouse. The keyboard shelves shall fit in a 2 RU rack space.



## technical information

<b>Rack mount shelves:</b>	SRM19FM1: 1.7"H x 19.0"W x 15.2"D (44mm x 483mm x 385mm), 1 RU SRM19FM2: 3.5"H x 19.0"W x 15.2"D (88mm x 483mm x 385mm), 2 RU SRM19CM3: 5.2"H x 19.2"W x 12.5"D (133mm x 489mm x 316mm), 3 RU SRM19CMV3: 5.2"H x 19.2"W x 25.0"D (133mm x 489mm x 635mm), 3 RU SRM19X18A1: 1.8"H x 19.0"W x 18.0"D (44mm x 483mm x 457mm), 1 RU SRM19X25A1: 1.8"H x 19.0"W x 25.0"D (44mm x 483mm x 635mm), 1 RU
<b>Shelf load rating:</b>	SRM19FM1: 30 lbs. SRM19FM2: 50 lbs. SRM19CM3: 200 lbs. SRM19CMV3: 200 lbs. SRM19X18A1: 250 lbs. SRM19X25A1: 250 lbs. SRM19MK2: 200 lbs.; keyboards up to 16.5" wide SRM19MPK2: 200 lbs.; keyboards up to 20.0" wide
<b>Keyboard shelves:</b>	SRM19MK2: 200 lbs.; keyboards up to 16.5" wide SRM19MPK2: 200 lbs.; keyboards up to 20.0" wide
<b>Keyboard shelves packaging:</b>	Keyboard shelves come with a mouse pad, wrist pad, four standard brackets for mounting to standard channel racks, two rear support brackets for mounting to NetFrame® Racks, and #12-24 mounting screws

## key features and benefits

<b>Center mount cantilevered shelf</b>	Includes front and rear shelf to mount on standard 3" channel racks
<b>Heavy load rating</b>	Support non-rack mountable equipment up to 250 lbs.
<b>Keyboard shelf versions include pull-out drawer with slide-out mouse tray</b>	Storing keyboards inside of shelf when not in use make an aesthetically pleasing rack

## applications

The Panduit line of shelves provide an aesthetically pleasing solution that allow you to mount test gear, computer equipment, and small networking devices on any EIA 19" rack or 23" rack with PEB1 or PEB2 extender brackets. This enables you to design a network layout to your own specifications.

When used with Panduit racks, enclosures, cable managers, and connectivity, the user receives a complete networking solution that will satisfy telecommunications room requirements today and into the future.

### Front Mount Shelves 19"

<b>1 RU:</b>	SRM19FM1
<b>2 RU:</b>	SRM19FM2

### Center Mount Cantilevered Shelves, 19" 3 RU

<b>Non-vented:</b>	SRM19CM3
<b>Vented:</b>	SRM19CMV3

### Adjustable Shelf 19" 1 RU

<b>19":</b>	SRM19X18A1
<b>25":</b>	SRM19X25A1

### Slide-Out Keyboard/Mouse and Monitor Shelf

<b>19":</b>	SRM19MK2
<b>19" pivoting:</b>	SRM19MPK2

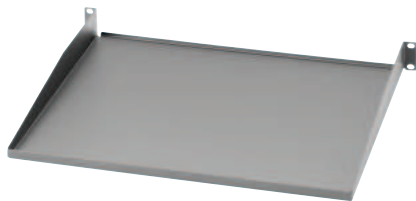
### Racks

<b>8' 52 RU:</b>	CMR19x96
<b>7' 45 RU:</b>	CMR19x84
<b>7' 45 RU numbers up:</b>	CMR19x84NU
<b>4' 24 RU:</b>	CMR19x47
<b>7' 45 RU 23" wide:</b>	CMR23x84

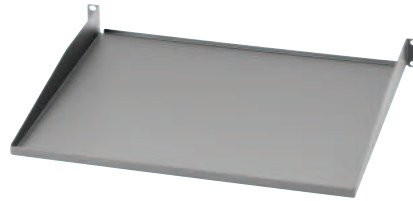
All have #12-24 threaded rails.

# Rack Mount Shelves

## *front mount shelves*

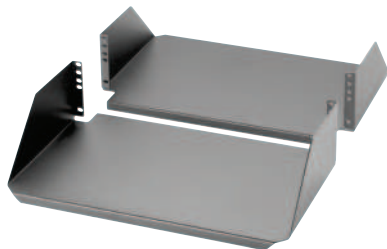


SRM19FM1

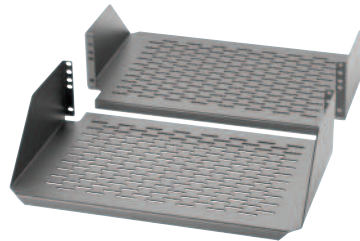


SRM19FM2

## *center mount cantilevered shelves*



SRM19CM3

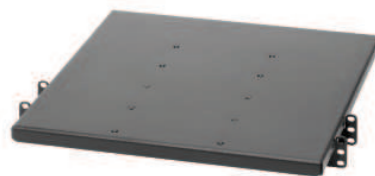


SRM19CMV3

## *slide-out keyboard shelves*



SRM19MPK2



SRM19X18A1

---

### WORLDWIDE SUBSIDIARIES AND SALES OFFICES

PANDUIT CANADA  
Markham, Ontario  
cs-cdn@panduit.com  
Phone: 800.777.3300

PANDUIT EUROPE LTD.  
London, UK  
cs-emea@panduit.com  
Phone: 44.20.8601.7200

PANDUIT SINGAPORE PTE. LTD.  
Republic of Singapore  
cs-ap@panduit.com  
Phone: 65.6305.7575

PANDUIT JAPAN  
Tokyo, Japan  
cs-japan@panduit.com  
Phone: 81.3.6863.6000

PANDUIT LATIN AMERICA  
Guadalajara, Mexico  
cs-la@panduit.com  
Phone: 52.33.3777.6000

PANDUIT AUSTRALIA PTY. LTD.  
Victoria, Australia  
cs-aus@panduit.com  
Phone: 61.3.9794.9020

For a copy of Panduit product warranties, log on to [www.panduit.com/warranty](http://www.panduit.com/warranty)

For more information

Visit us at [www.panduit.com](http://www.panduit.com)

Contact Customer Service by email: [cs@panduit.com](mailto:cs@panduit.com)  
or by phone: 800.777.3300

**PANDUIT**<sup>®</sup>

©2014 Panduit Corp.  
ALL RIGHTS RESERVED.  
**RKSP146--WW-ENG**  
Replaces WW-RKSP20  
8/2014